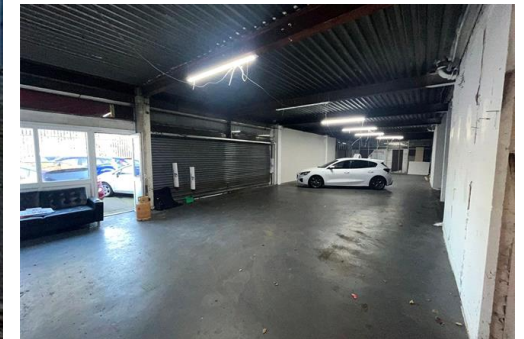
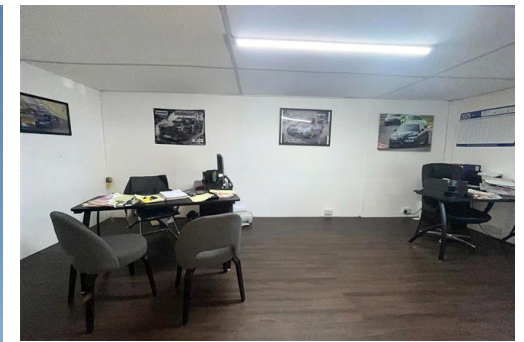




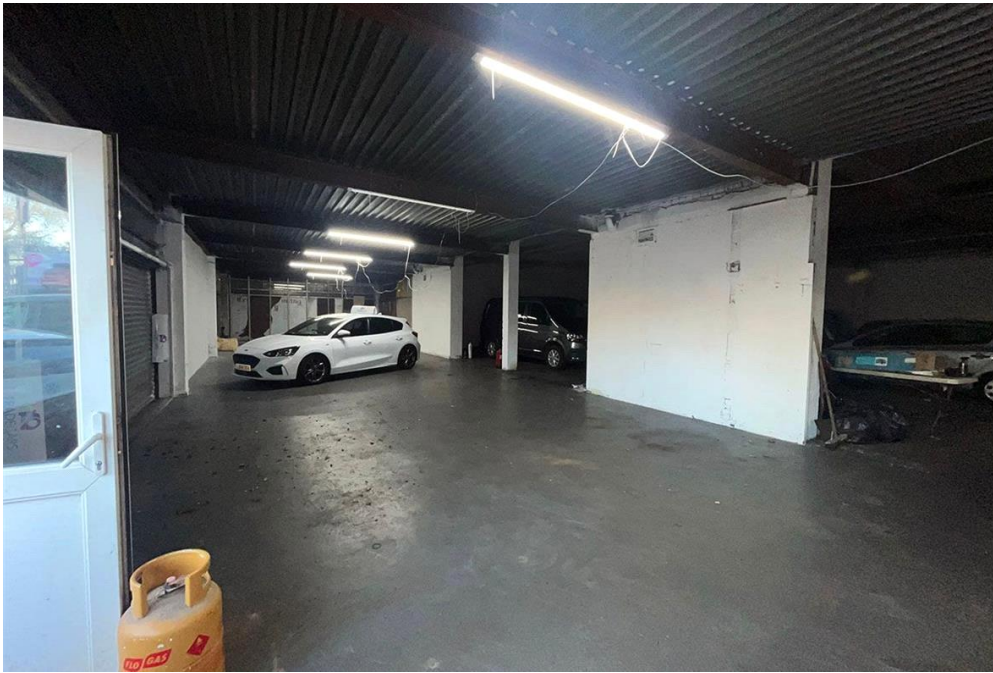
## UNIT 1, LONG LANE, WALTON, LIVERPOOL

Industrial unit and yard space available for rent. Approx. 5077sqft. Located on Long Lane in the L9 area of Liverpool.

**£4,190 pcm** Light Industrial to rent



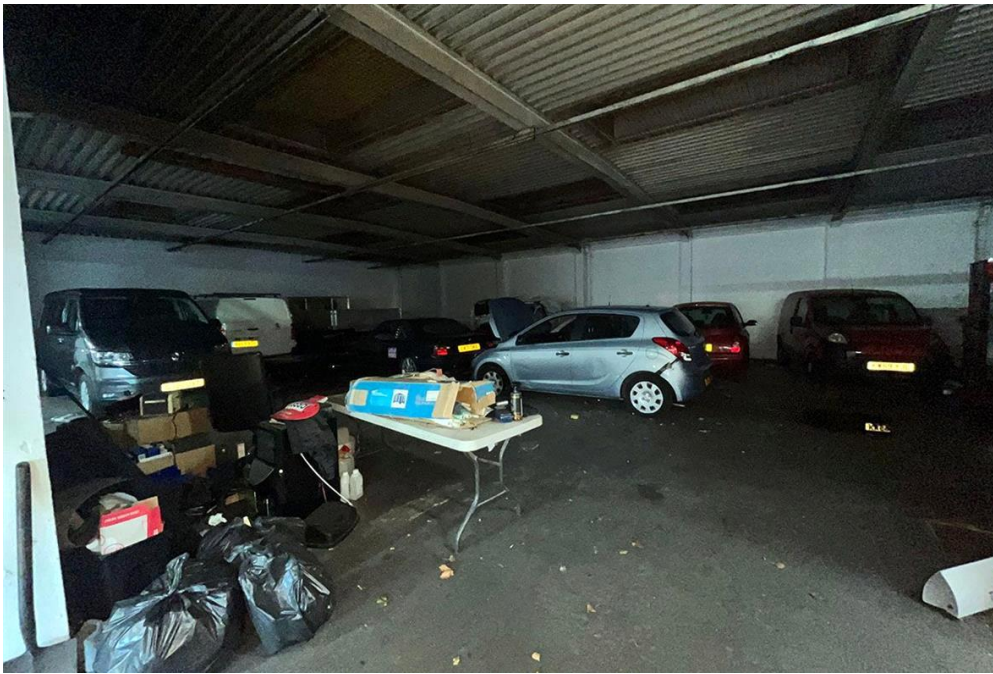
THE  
**Centaur & Barclay**  
PROPERTY GROUP

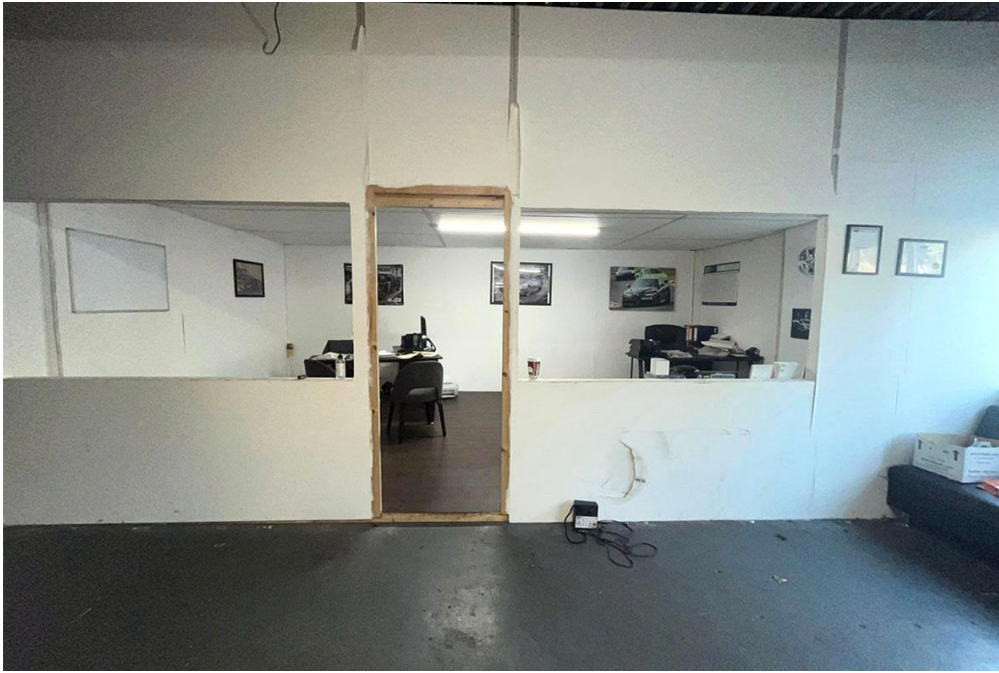
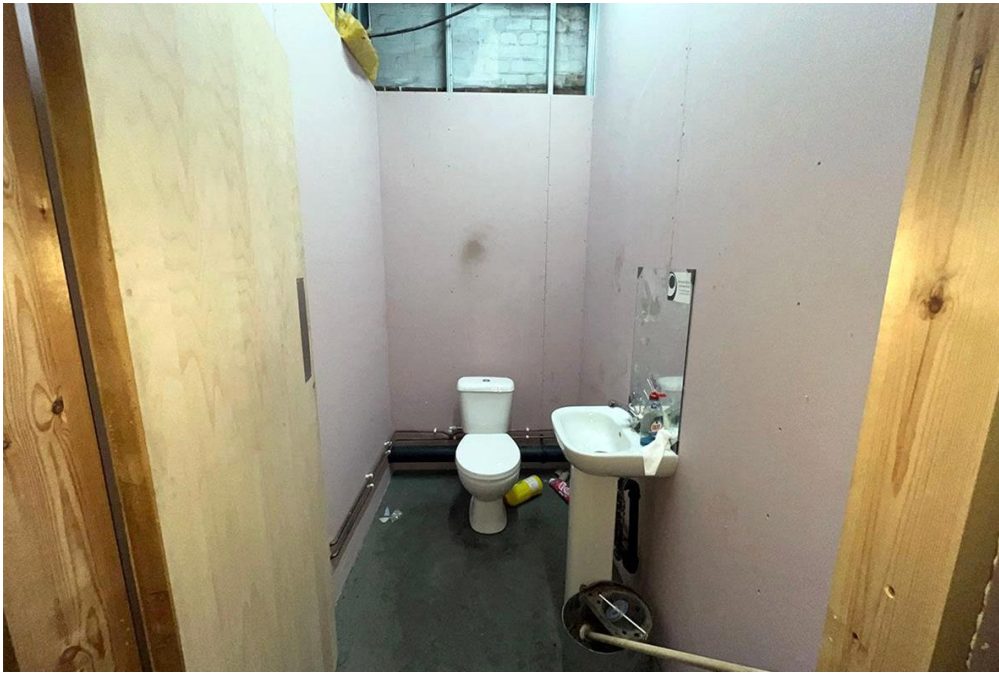


Centaur & Barclay are pleased to offer for rent this 5077 sqFt industrial unit and yard space available from January onwards.

Price includes service charge and building insurance. Price does not include VAT.

Please contact us for further information or to arrange a viewing.







Viewing by appointment only  
The Centaur and Barclay Property Group  
40 Lower Gravel Road, Bromley, Kent BR2 8GP  
Tel: 02082856900 Email: [info@centaurproperties.co.uk](mailto:info@centaurproperties.co.uk) Website:

Whilst every effort is made to ensure the accuracy of these details, it should be noted that the measurements are approximate only. Floorplans are for representation purposes only and prepared according to the RICS Code of Measuring Practice by our floorplan provider. Therefore, the layout of doors, windows and rooms are approximate and should be regarded as such by any prospective tenant.