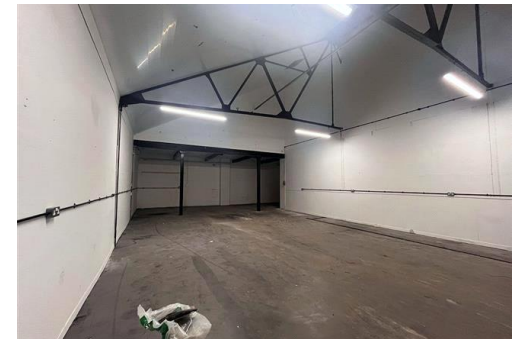
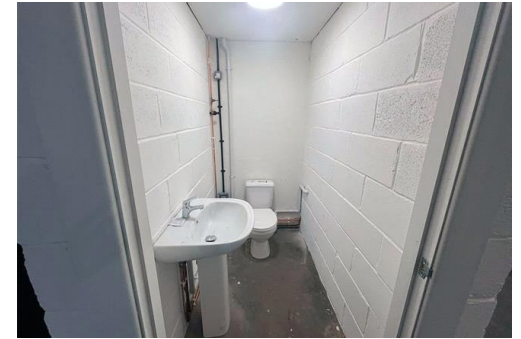


UNIT 24 NELSONS BUSINESS PARK

Centaur and Barclay are pleased to offer for rent this 1680 SqFt light industrial / commercial unit to let on Nelsons Business Park. Available for viewings now.

£878 pcm Unit To Rent L9



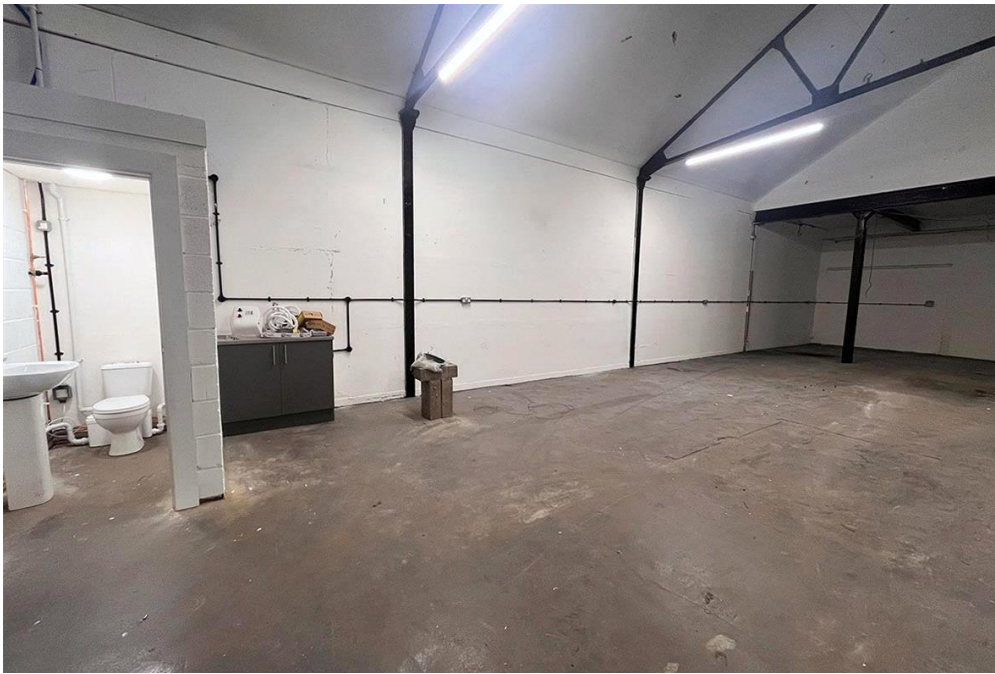
THE
Centaur & Barclay
PROPERTY GROUP



A great opportunity to let this light industrial / commercial unit on the well established Nelsons Business Park.

Please contact Centaur and Barclay on 0208 285 6900 for more information and to arrange a viewing.

*Price includes BI and SC excludes VAT



Viewing by appointment only
The Centaur and Barclay Property Group
40 Lower Gravel Road, Bromley, Kent BR2 8GP
Tel: 02082856900 Email: info@centaurproperties.co.uk Website:

Whilst every effort is made to ensure the accuracy of these details, it should be noted that the measurements are approximate only. Floorplans are for representation purposes only and prepared according to the RICS Code of Measuring Practice by our floorplan provider. Therefore, the layout of doors, windows and rooms are approximate and should be regarded as such by any prospective tenant.