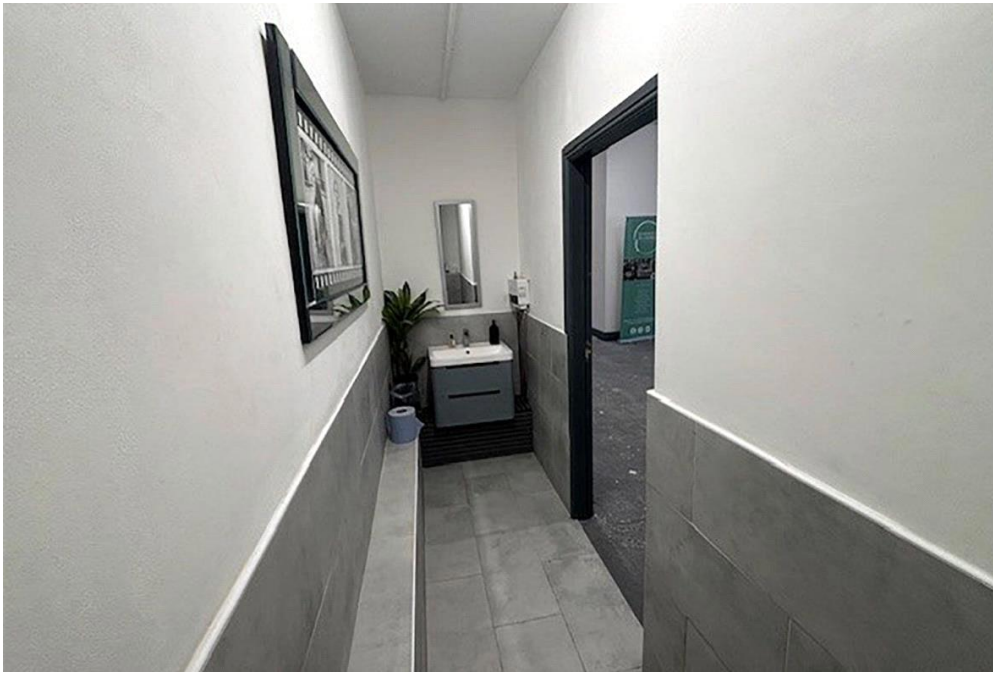


CH UNIT 2, BARCLAYS BUSINESS PARK

Centaur and Barclay are pleased to offer for let this recently refurbished 1497 SqFt Industrial Unit located on the popular Barclay Business Park, accessed off Brookfield Drive, L9.

£1,282 pcm Newly Refurbished

THE
Centaur & Barclay
PROPERTY GROUP



Recently refurbished unit to let located on the Barclays Business Park which is accessed off Brookfield Drive L9. Parking available. Prices include service charges and exclude VAT. Contact us now for further information. Check out the marketing video!



Viewing by appointment only
The Centaur and Barclay Property Group
40 Lower Gravel Road, Bromley, Kent BR2 8GP
Tel: 02082856900 Email: info@centaurproperties.co.uk Website:

Whilst every effort is made to ensure the accuracy of these details, it should be noted that the measurements are approximate only. Floorplans are for representation purposes only and prepared according to the RICS Code of Measuring Practice by our floorplan provider. Therefore, the layout of doors, windows and rooms are approximate and should be regarded as such by any prospective tenant.