

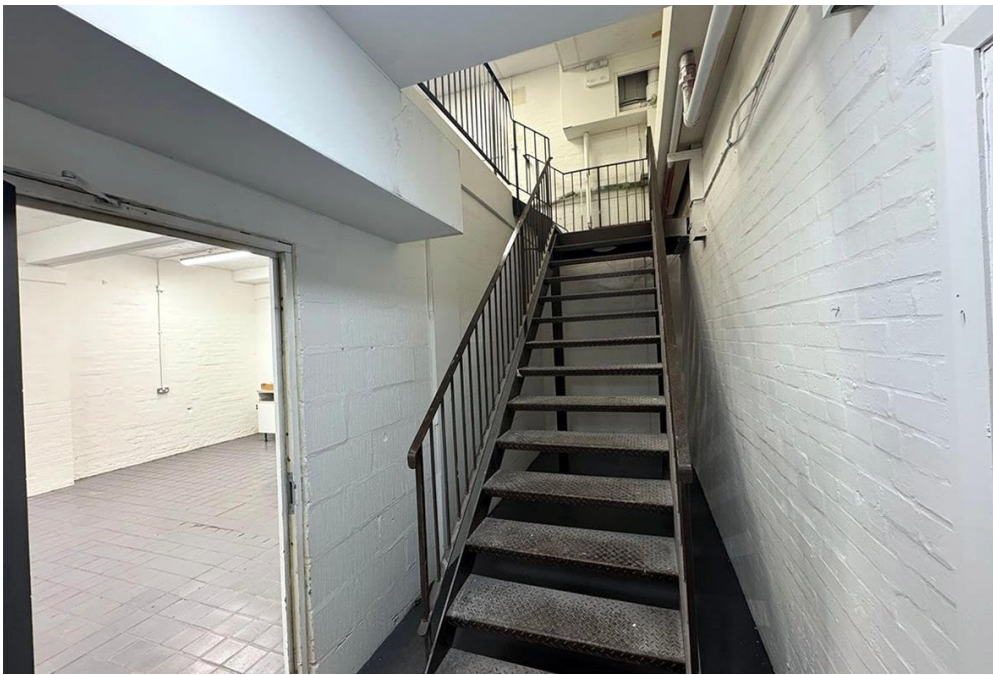
UNIT R CHAMPIONS BUSINESS PARK, WIRRAL

Centaur and Barclay Property Group are pleased to offer for let this 1404 Sqft industrial unit located on the popular Champions Business Park.

£814 pcm 1404 SqFt Unit, CH49 0AB

LET AGREED

THE
Centaur & Barclay
PROPERTY GROUP

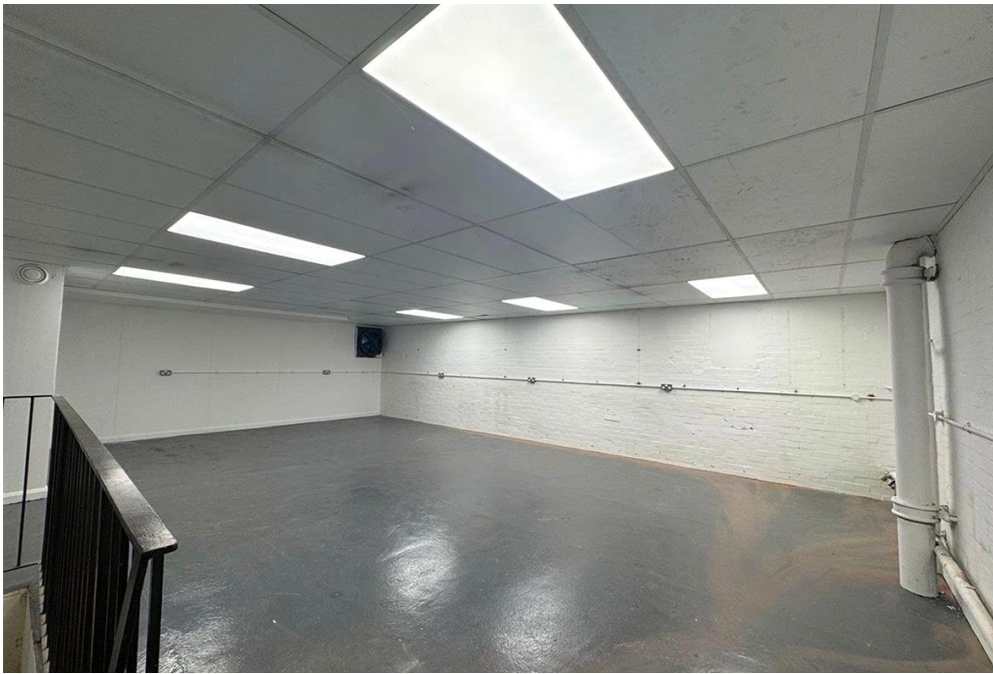


This unit is over 2 floors with the ground floor perfect for workshop space and the second floor for office / stock space.

We currently have a wide range of commercial, industrial and office space to rent at our Champions business park with more exciting developments on the way!

Price includes service charge and insurance (VAT to be applied)

Please contact Centaur and Barclay on 0208 285 6900 for further information and to arrange a viewing





Viewing by appointment only
The Centaur and Barclay Property Group
40 Lower Gravel Road, Bromley, Kent BR2 8GP
Tel: 02082856900 Email: info@centaurproperties.co.uk Website:

Whilst every effort is made to ensure the accuracy of these details, it should be noted that the measurements are approximate only. Floorplans are for representation purposes only and prepared according to the RICS Code of Measuring Practice by our floorplan provider. Therefore, the layout of doors, windows and rooms are approximate and should be regarded as such by any prospective tenant.