

Explore this versatile industrial/warehouse unit located on Wellington St, Robertstown, Aberdare, Offers over 10,000 sq. ft. of premium space tailored to meet the needs of any modern business

Featuring free on-site parking, and much more

Versatile Industrial Unit

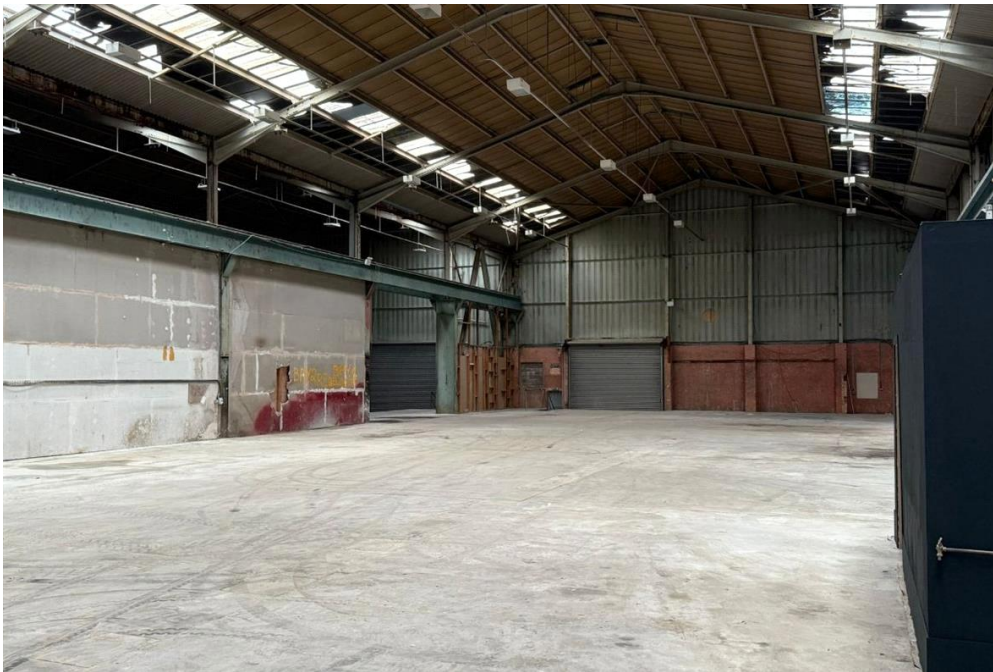


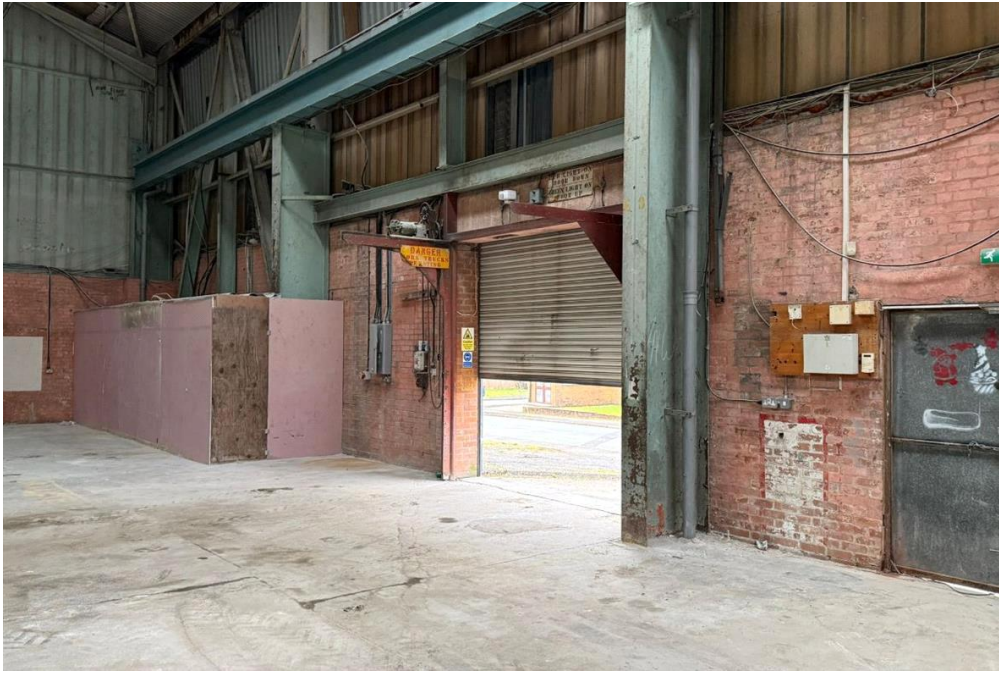


Centaur and Barclay Properties are excited to present a remarkable opportunity to acquire a prime property on Wellington St, Robertstown, Aberdare. This spacious facility encompasses over 10,000 square feet of adaptable space, making it ideal for a variety of uses, including industrial operations, commercial, or warehouse use.

Take advantage of this unique opportunity and establish your business in an industrial hub.

Price excludes service charge & insurance.



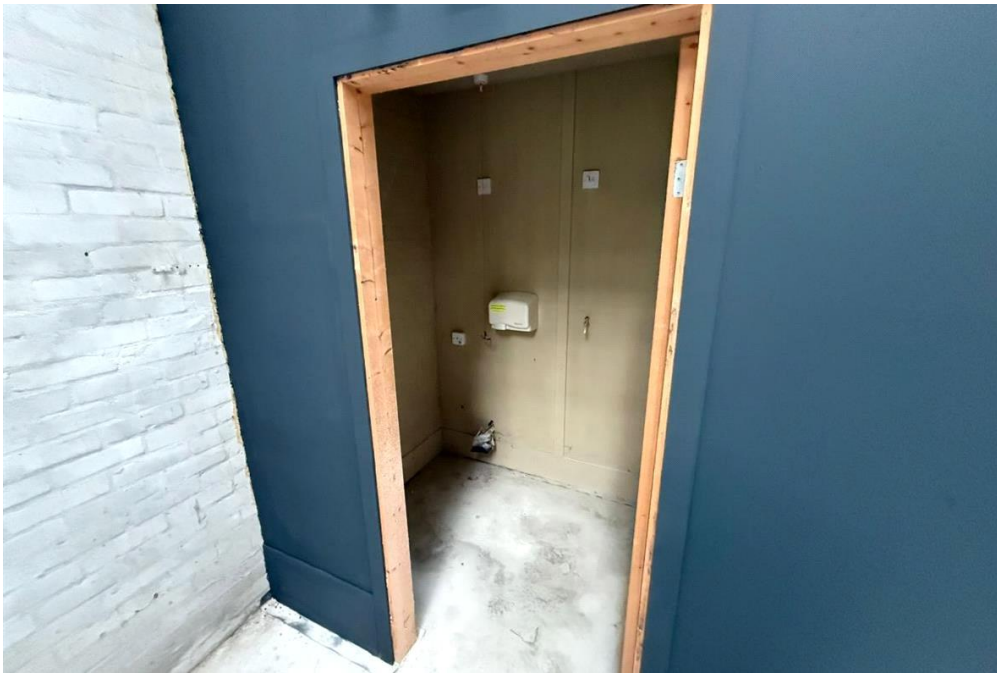














Viewing by appointment only
The Centaur and Barclay Property Group
40 Lower Gravel Road, Bromley, Kent BR2 8GP
Tel: 02082856900 Email: info@centaurproperties.co.uk Website:

Whilst every effort is made to ensure the accuracy of these details, it should be noted that the measurements are approximate only. Floorplans are for representation purposes only and prepared according to the RICS Code of Measuring Practice by our floorplan provider. Therefore, the layout of doors, windows and rooms are approximate and should be regarded as such by any prospective tenant.