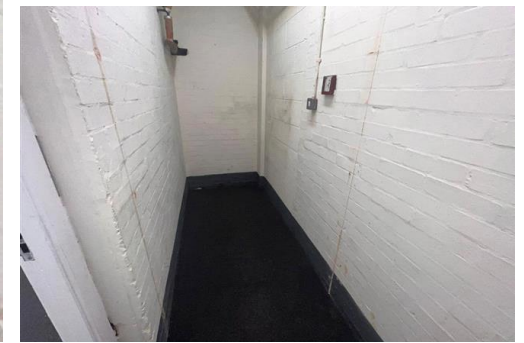




## UNIT P38

Centaur and Barclay are pleased to offer for let this 420 SqFt Unit located on the popular Champions Business Park. Prices include service charge & insurance excluding VAT. Available to view now.

**£313 pcm** 420 SqFt Unit For Rent Champions Business Park



**LET AGREED**

THE  
**Centaur & Barclay**  
PROPERTY GROUP



The unit is situated on a well established business park which is easily accessible, with excellent motorway and public transport links.

We currently have a wide range of commercial, industrial and office space to rent at our Champions business park with more exciting developments on the way!

Please contact Centaur and Barclay on 0208 285 6900 for further information and to arrange a viewing.





Viewing by appointment only  
The Centaur and Barclay Property Group  
40 Lower Gravel Road, Bromley, Kent BR2 8GP  
Tel: 02082856900 Email: [info@centaurproperties.co.uk](mailto:info@centaurproperties.co.uk) Website:

Whilst every effort is made to ensure the accuracy of these details, it should be noted that the measurements are approximate only. Floorplans are for representation purposes only and prepared according to the RICS Code of Measuring Practice by our floorplan provider. Therefore, the layout of doors, windows and rooms are approximate and should be regarded as such by any prospective tenant.