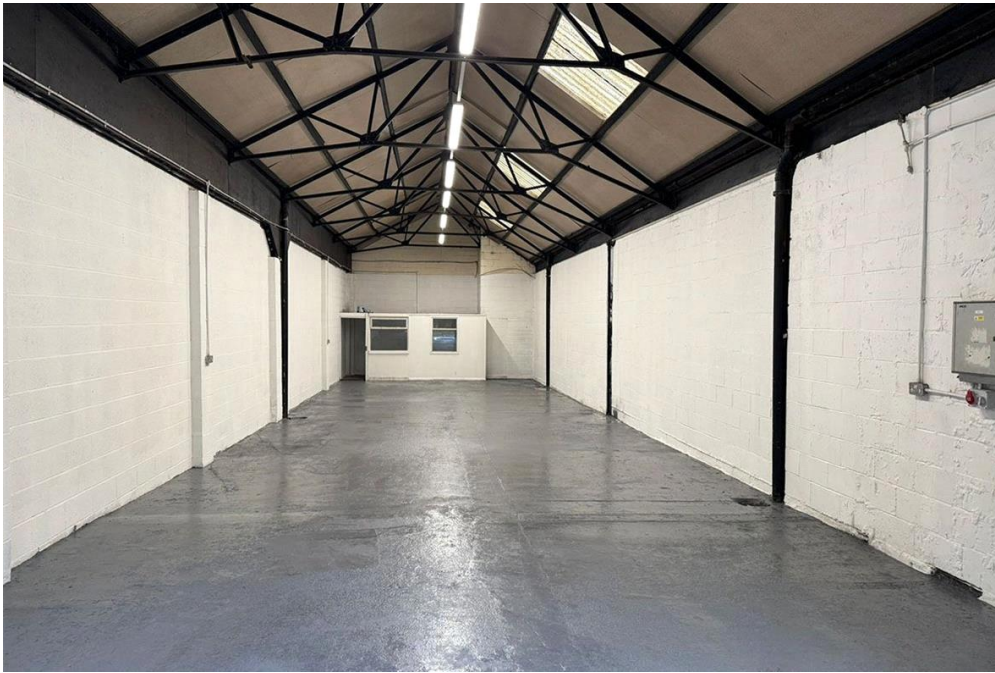


Centaur and Barclay are pleased to offer for let this 1620 SqFt Industrial Unit located on Hartley Avenue.

**£785 pcm** 1620 SqFt Unit, L9

**LET AGREED**

THE  
**Centaur & Barclay**  
PROPERTY GROUP



The unit offers plenty of space 1620 sqFt with roller shutter access.

Please contact Centaur and Barclay on 0208 285 6900 for more information and to arrange a viewing.

Price Inc. service charge and insurance. (VAT to be applied)



Viewing by appointment only  
The Centaur and Barclay Property Group  
40 Lower Gravel Road, Bromley, Kent BR2 8GP  
Tel: 02082856900 Email: [info@centaurproperties.co.uk](mailto:info@centaurproperties.co.uk) Website:

Whilst every effort is made to ensure the accuracy of these details, it should be noted that the measurements are approximate only. Floorplans are for representation purposes only and prepared according to the RICS Code of Measuring Practice by our floorplan provider. Therefore, the layout of doors, windows and rooms are approximate and should be regarded as such by any prospective tenant.